

# kingfisher



## Eats:

minnows



insects



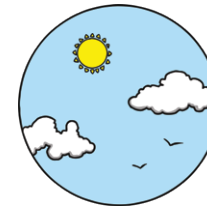
tadpoles



# kingfisher



**Awake:** during the day



# kingfisher



## Lives:

by rivers



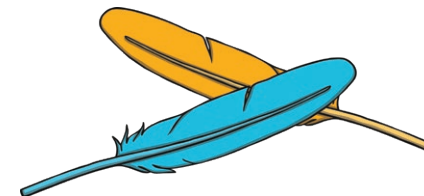
and lakes



# kingfisher



## Feathers:



**barn owl**



**Eats:**

mice



shrews



frogs



**barn owl**



**Awake:** at night



**barn owl**



**Lives:**

in woods



and near fields



**barn owl**

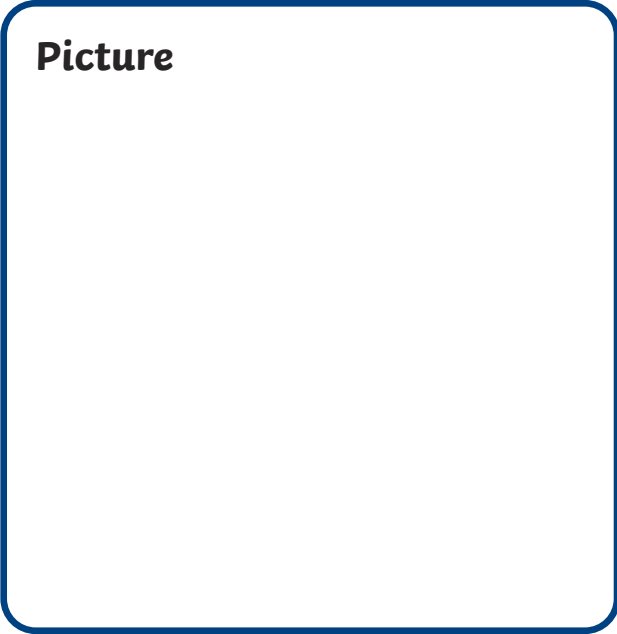


**Feathers:**



# All About \_\_\_\_\_

**Picture**



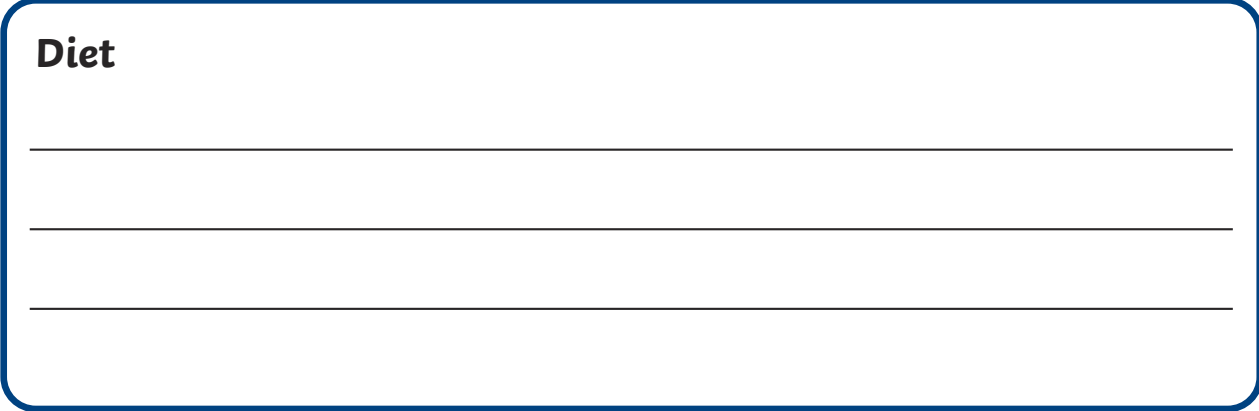
**Description**



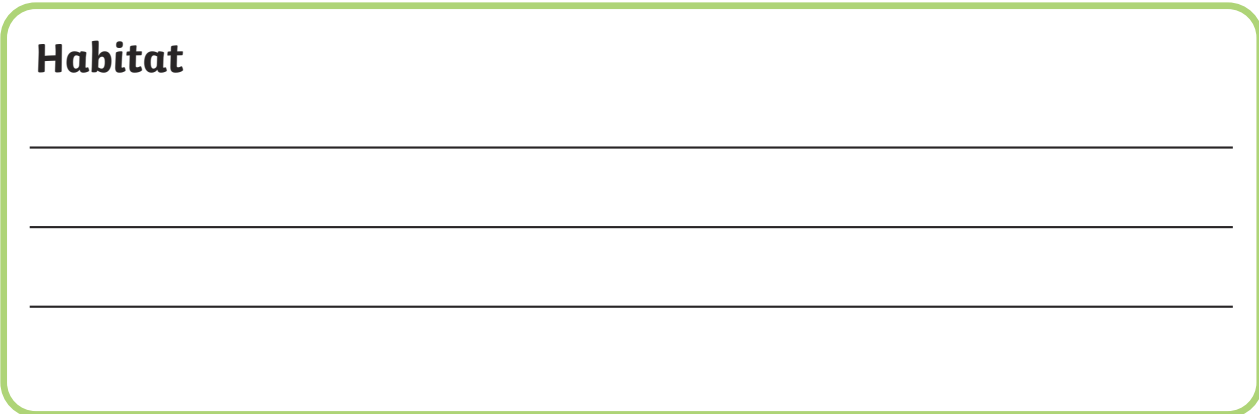
**Nocturnal or Diurnal?**



**Diet**



**Habitat**



# All About \_\_\_\_\_

**Picture**

**Description**

**Nocturnal or Diurnal?**

**Diet**

**Habitat**